



Air Diffusers

Imperial



Ceiling application



Wall application



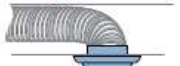
▶ Round Air Diffuser

- ▶ For exhaust or air intake wall and ceiling applications
- ▶ Adapts to 4" - 5" and 5" - 6" round duct
- ▶ Fully adjustable airflow

SKU #	DESCRIPTION	STD. PKG.	CTN. QTY.	UPC
VT0110	4" or 5" Round Air Diffuser WHITE	Tray	15	063467720010
VT0111	5" or 6" Round Air Diffuser WHITE	Tray	10	063467720027



Ceiling application



Wall application



▶ Round Air Diffuser (With Collar)

- ▶ For exhaust or air intake wall and ceiling applications
- ▶ Includes mounting collar and screws
- ▶ Fully adjustable airflow

SKU #	DESCRIPTION	STD. PKG.	CTN. QTY.	UPC
DR-04-B	4" Premium Round Air Diffuser with Collar WHITE	Tray	15	058680002470
DR-05-B	5" Premium Round Air Diffuser with Collar WHITE	Tray	10	058680002487
DR-06-B	6" Premium Round Air Diffuser with Collar WHITE	Tray	10	058680002494
DR-08	8" Premium Round Air Diffuser with Collar WHITE	Bulk	10	058680002500

SCD
Square Cone Diffuser



SCD – 24 in. x 24 in. Face Size

Listed Size	Neck Velocity (fpm)	400	500	600	700	800	900	1000	1200	1400	1600
	Velocity Pressure (in. w.g.)	.01	.016	.022	.031	.040	.050	.062	.090	.122	.160
6	Total Pressure (in. w.g.)	.015	.023	.034	.046	.060	.076	.094	.135	.183	.239
	Flow Rate (cfm)	78	98	118	137	157	176	196	235	274	314
	Sound (NC)	-	-	-	-	15	19	22	28	33	37
	Throw (ft.)	1-2-4	1-2-4	2-3-5	2-3-6	2-4-7	3-4-7	3-4-7	4-5-8	4-6-9	5-7-9
8	Total Pressure (in. w.g.)	.016	.025	.037	.050	.065	.082	.102	.146	.199	.260
	Flow Rate (cfm)	140	175	209	244	279	314	349	419	489	558
	Sound (NC)	-	-	-	-	19	22	26	31	36	40
	Throw (ft.)	2-2-5	2-3-6	2-4-7	3-4-8	3-5-9	4-6-9	4-6-10	5-7-11	6-8-12	7-9-12
10	Total Pressure (in. w.g.)	.019	.030	.044	.060	.078	.098	.122	.175	.238	.311
	Flow Rate (cfm)	218	273	327	382	436	491	545	654	763	872
	Sound (NC)	-	-	-	17	21	25	28	34	39	43
	Throw (ft.)	2-3-6	3-4-8	3-5-9	4-6-10	4-6-11	5-7-12	5-8-12	6-9-13	8-10-14	9-11-15
12	Total Pressure (in. w.g.)	.023	.036	.051	.070	.091	.115	.142	.205	.279	.364
	Flow Rate (cfm)	314	393	471	550	628	707	785	942	1099	1256
	Sound (NC)	-	-	-	19	24	27	30	36	41	45
	Throw (ft.)	3-4-8	3-5-10	4-6-11	5-7-12	5-8-13	6-9-14	7-10-15	8-11-16	9-12-17	11-13-19

SDS
Linear Slot Diffuser



SDB Plenum

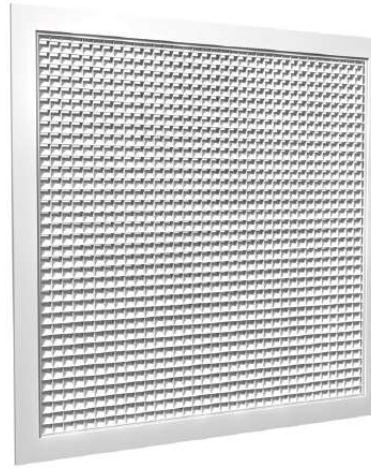


SDA Plenum

SDS with SDB Plenum

Flow Rate (cfm)			120	140	160	180	200	220	240	260	280
36 in. (5 in. Inlet)	Throw (ft.)	H V	13-16-23	14-17-25	15-19-26	16-20-28	17-21-30	18-22-31	19-23-32	19-24-34	20-25-35
	Total Pressure (in. w.g.)		15	16	17	18	19	20	21	21	22
	Sound (NC)		0.135	0.184	0.240	0.304	0.375	0.454	0.541	0.634	0.736
48 in. (6 in. Inlet)	Throw (ft.)	H V	9-14-21	11-16-23	12-17-24	14-18-26	15-19-27	16-20-28	17-21-30	18-22-31	18-23-32
	Total Pressure (in. w.g.)		15	16	17	18	19	20	21	22	23
	Sound (NC)		0.071	0.096	0.125	0.159	0.196	0.237	0.282	0.331	0.384
60 in. (6 in. Inlet)	Throw (ft.)	H V	5-9-19	7-11-20	8-12-22	9-14-23	10-16-24	11-17-26	12-19-27	14-20-28	15-20-29
	Total Pressure (in. w.g.)		16	17	18	19	20	21	22	23	24
	Sound (NC)		0.056	0.077	0.100	0.127	0.157	0.190	0.226	0.265	0.307
			-	19	22	26	28	31	33	36	38

80
Egg Crate Return Grille



85 - 45° Core

Core Area (sq. ft.)	Nominal Size			Core Velocity (fpm)	Velocity Pressure (in. w.g.)	100	200	300	400	500	600	700		
													Neg. Static Pressure (in. w.g.)	
						0.01	0.034	0.068	0.112	0.166	0.228	0.298		
0.52	24x4 18x5	16x6			Flow Rate (cfm)	52	104	156	208	260	312	364		
					Sound (NC)	-	-	-	19	26	30	35		
0.69	30x4 24x5	20x6 14x8	12x10			Flow Rate (cfm)	69	138	207	276	345	414	483	
						Sound (NC)	-	-	-	20	27	31	36	
1.60	72x4 30x8	24x10 22x12	18x14 16x16			Flow Rate (cfm)	160	320	480	640	800	960	1120	
						Sound (NC)	-	-	16	23	30	34	39	
1.80	60x5 48x6	36x8 30x10	24x12 20x14	18x16			Flow Rate (cfm)	180	360	540	720	900	1080	1260
							Sound (NC)	-	-	16	24	30	35	39
2.08	72x5 60x6	40x8 36x10	30x12 24x14	20x16 18x18			Flow Rate (cfm)	208	416	624	832	1040	1248	1456
							Sound (NC)	-	-	17	24	30	35	40
2.45	72x6 48x8	32x12 26x14	24x16 20x18			Flow Rate (cfm)	245	490	735	980	1225	1470	1715	
						Sound (NC)	-	-	17	25	31	36	40	
2.78	36x12 30x14	26x16 24x18	22x20			Flow Rate (cfm)	278	556	834	1112	1390	1668	1946	
						Sound (NC)	-	-	18	25	32	36	41	
3.61	72x8 60x10	48x12 36x16	30x18 24x24			Flow Rate (cfm)	361	722	1083	1444	1805	2166	2527	
						Sound (NC)	-	-	19	26	32	37	42	